



Spare Parts Catalog

4 WG 210

Material number: 4657.054.026

Current date: 09.02.2022

ZF Friedrichshafen AG
Hauptverwaltung
80038 Friedrichshafen
Deutschland

Telefon: +49 7541 77-0

Telefax: +49 7541 77-908000

www.zf.com

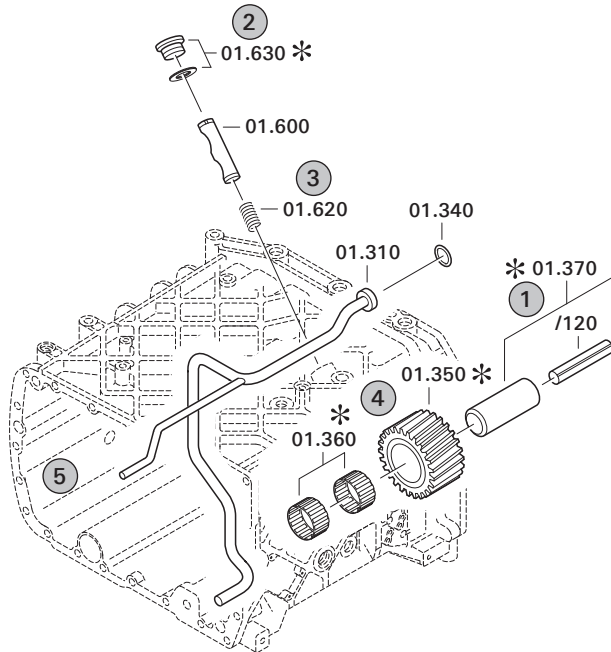
zuständiges Werk:
Passau

Notes relating to the spare parts catalog

Setup of the spare parts catalog

- Cover sheet
- Technical Cover (only in SDM print)
- Overview of figures
- Figure
- Associated parts list
- Next figure
- Associated parts list
- ...

Figure and parts list



Overview of figures

Bildtafel Figure	Sachnummer Product number	Benennung (Description)	Technische Info Technical info	Description (Benennung)	Menge Quantity	Einheit Unit
068.08.17	1316.170.001	AUSLEGER	WL	SHIFT TURRET	1	Stk
068.08.06	1316.170.031	DECKEL	WL*H-H *VM	COVER	1	Stk
068.08.14	1316.170.808	DECKEL	WL*AUSL+GEH*H-H*HF160N	COVER	1	Stk
08	1316.170.441	ANSCHLUSSTEILE	WL*NG-VORB*RG-SCHL*168N *BAJONETT	CONNECTING PARTS	1	Stk

The "gap" indicates that there is no separate graphics panel (poster) for this assembly
The parts of this assembly are shown with the same mid-section number on the figure

1 Positions and subpositions

Pos.	Sachnummer Product number	Benennung (Description)	Technische Info Technical info	Description (Benennung)	Menge Quantity	Einheit Unit
0370	1315.201.054	RUECKLAUFBOLZEN	KPL.16S151*SG*L= 79	REV.IDLER SHAFT	1	Stk
/0120	0631.329.293	SPANNSTIFT		SLOT. PIN	1	Stk

Positions marked with "/" are the individual items of a completion
For example: Position 0370 contains a centering pin with the position /0120

2 Combinations with standardized parts

Pos.	Sachnummer Product number	Benennung (Description)	Technische Info Technical info	Description (Benennung)	Menge Quantity	Einheit Unit
0630		VERSCHL.SCHR.		SCREW PLUG	1	Stk
	0636.302.067	VERSCHL.SCHR.		SCREW PLUG	1	Stk
	0634.801.249	DICHTRING	A 26 X 31	SEALING RING	1	Stk

The parts list shows the components included in the combination of standardized parts

3 Depiction of position/item number on the figure and in the parts list

01.620 - on the figure 01 relates to the assembly in which the position is included. Due to program-related reasons, it is shown on the figure.

0620 - in the parts list

Pos.	Sachnummer Product number	Benennung (Description)	Technische Info Technical info	Description (Benennung)	Menge Quantity	Einheit Unit
0620	0732.040.736	DRUCKFEDER		COMPRESSION SPRING	1	Stk

4 *-Positions

Positions marked with an * are optional i.e. inclusion in the parts list is not mandatory.
The following note is shown on the figure

je nach Stücklistenausführung
depending on spec. number
*
suivant la nomenclature
secondo la distinta base

5 Parts, dotted display

Parts with dotted display on the figure are only used for orientation of other parts

Technical Cover

Page 1 from 6

Material number: 4657.054.026



4 WG 210 /

Pos.	Information	Amendment number
	CUSTOMER:CASE/USA	
	CUSTOMER:	
	IDENT-NR:196174A1	
	CUSTOMER NO.:	
	PROJEKT-NR.:33421	
	PROJECT-NO.:	
	VEHICLE DATA:	
	VEHICLE DATA:	
	RADLADER 821 C	
	VEHICLE TYPE:	
	FAHRZEUGMASSE: LEER: 17,69T	
	VEHICLE WEIGHT: EMPTY.....T0	
	MOTOR: CASE 6T-830	
	ENGINE/MAKE/TYPE:	
	ENGINE POWER: P=129 KW TO N=2200 UPM	
	ENGINE POWER:	
	ENGINE PERFORM.ACC.TO TRACTIVE EFFORT CALCUL.	
	ENGINE PERFORM.ACC.TO TRACTIVE EFFORT CALCUL.	
	DREHMOMENT: T= 770 NM BEI N=1200 UPM	
	INPUT TORQUE:	
	REIFEN: 23.5-R25	
	TIRES:	
	R.DYN. 0,714 M	
	ACHSUEBERSETZUNG:I A-GES.= 23,510	
	AXLE RATIO: I TOTAL=	
	MAX.SPEED: 34,0 KM/H	
	MAX.SPEED:	
	FAHRLEIST.BERECHNUNG: 4657 706 188	
	PERFORMACE CALCULATION:	
	PRODUCT DESCRIPTION:	
	PRODUCT DESCRIPTION	
	TYP: 4WG-210	
	BEVEL SIDE GEAR SPLINE: N 38X1,25	

Technical Cover

Page 2 from 6

Material number: 4657.054.026



4 WG 210 /

Pos.	Information	Amendment number
	INSTALLATION: DIRECT MOUNTED	
	INSTALLATION: DIRECT MOUNTED	
	RATIOS TOTAL:	
	RATIOS:	
	FORWARD:	
	FORWARD:	
	1.G=3,745 2.G=2,089 3.G=1,072 4.G=0,666	
	REVERSE:	
	REVERSE:	
	1.G=3,551 2.G=1,981 3.G=1,017	
	INPUT:	
	INPUT:	
	DIRECT FLANGE ATTACHMENT	
	DIRECT MOUNTED SAE 3	
	OUTPUT:	
	OUTPUT:	
	FLANSCH: WANDLERSEI. DANA SPICER 1610	
	FLANGE: CONVERTER SIDE	
	FLANSCH: BREMSSEITIG DANA SPICER 1610	
	FLANGE: BRAKE SIDE	
	POWER TAKE-OFF(PTO): NO SHIFTABLE	
	P.T.O.: NOT SHIFTABLE	
	COAX.ENGINE DRIVEN:	
	COAX.ENGINE DRIVEN:	
	GEAR SELECTION: HSG 94	
	GEAR SELECTION:	
	MOUNTING POSIT.:REAR AT THE GEARBOX	
	MOUNTING POSIT.: REAR AT THE GEARBOX	
	VOLTAGE: 24 VOLT	
	VOLTAGE:	
	OPERATING PRES.: 16+2 BAR	
	OPERATING PRESSURE:	
	CONNECTION WIRING: SCREW CONNECTION	



Pos.	Information	Amendment number
	CONNECTION WIRING: SCREW CONNECTION	
	CONVERTER LOCK-UP CONTROL: WITHOUT	
	CONVERTER LOCK-UP CONTROL: WITHOUT	
	PR.DIFF.SWITCH: WITH	
	PR.DIFF.SWITCH: WITH	
	WARNING SWITCH F.OIL TEMPERATUR: WITH	
	WARNING SWITCH F.OIL TEMPERATUR:WITH	
	GEAR SELECTOR: SEPARATE ORDER	
	GEAR SELECTOR: SEPARATE ORDER	
	TYPE: DW 3	
	BEVEL SIDE GEAR SPLINE: N 38X1,25	
	WIRING: WITHOUT	
	WIRING: WITHOUT	
	INDUCTIVE SENSOR TURB.SPEED: Z=54	
	INDUCTIVE SENSOR TURB.SPEED	
	INDUCT.SENS.INTERMEDIATE GEAR TRAIN: Z=55	
	INDUCT.SENS.INTERMEDIATE GEAR TRAIN	
	INDUCTIVE SENSOR ENGINE-SPEED: Z= 4	
	INDUCTIVE SENSOR ENGINE-SPEED	
	SENSOR OUTPUT SPEED	
	SENSOR OUTPUT SPEED	
	PARKING BRAKE: WITH	
	PARKING BRAKE: WITH	
	DISC BRAKE: HYDR.RELEASE	
	DISC BRAKE: HYDR.RELEASE	
	TYPE/SIZE 14245 SPRING ACCUMULATOR D=380	
	TYPE/SIZE	
	SPEEDOMETER: WITHOUT	
	SPEEDOMETER: WITHOUT	
	OIL DIPSTICK: WITHOUT	
	OIL DIPSTICK: WITHOUT	
	AXLE DISCONNECT: NO	
	AXLE DISCONNECT: WITHOUT	

Technical Cover

Page 4 from 6

Material number: 4657.054.026



4 WG 210 /

Pos.	Information	Amendment number
	ZF-FILTER: BOLTED ON	
	ZF-FILTER: BOLTED ON	
	T-CONVERTER:	
	TORQUE CONVERTER:	
	BEZEICHNUNG: F&S 340	
	MARKING:	
	GRUNDKURVE: 034 H 112	
	CHARACTERISTICS:	
	ANFAHRWANDLUNG: 2,845	
	START.TORQUE RAT.:	
	STATOR FREEWHEEL:WITHOUT	
	STATOR FREEWHEEL:WITHOUT	
	BREAK FREEWHEEL: WITHOUT	
	BRAKE FREEWHEEL: WITHOUT	
	LOCK-UP CLUTCH: WITHOUT	
	TORQUE CONVERTER LOCK-UP: WITHOUT	
	GROUND DRIV.PUMP: WITHOUT	
	GROUND DRIV.PUMP: WITHOUT	
	DRAWINGS:	
	DRAWINGS:	
	SCHNITT: 4657 500 092()	
	SECT.DRAWING:	
	SCHNITT: 4657 500 092(0)	
	SECT.DRAWING:	
	EINBAU: 4657 654 026(0)	
	INST.DRAWING:	
	MOTOR-ANBAU: 4657 500 148(1)	
	ENGINE CONN.:	
	GETR.SCHEMA: 4657 700 035(2)	
	TRANSM.DIAGRAM:	
	OEL-SCHEMA: 4657 700 040()	
	OIL-DIAGRAM:	
	WANDLER: 4168 034 062()	



Pos.	Information	Amendment number
	TORQUE CONVERTER:	
	CALCULATIONS:	
	CALCULATIONS:	
	ZUGKRAFT: ()	
	TR.FORCE DIAGRAM:	
	ASSEMBLY-GUIDELINE: 4657 700 079	
	INSTALLATION SPECIFICATION:	
	DRAWING FOR ELECTR.PARTS	
	DRAWING FOR ELECTR.PARTS	
	FAHRSCHALTER:6006 630 023()EBZ	
	RANGE SELECTOR:	
	STEUERUNG: 6009 665 001()EBZ	
	CONTROL UNIT:	
	STROMLAUFPL.:6029 700 934(1)	
	WIRING DIAGRAM:	
	EST-PROGR.TEST-BENCH:	
	EST-PROGR.TEST-BENCH:	
	OIL CAPACITY:	
	OIL CAPACITY:	
	TOTAL: 27,00L	
	TOTAL: CA.29,00L	
	OIL FILLING: NO	
	OIL FILLING: NO	
	OIL GRADE:SPECIFICATION TE ML 03 / TRANSMISSION	
	OIL GRADE:SPECIFICATION TE ML 03 TRANSMISSION	
	GESAMT-TROCKENMASSE: 498KG	
	WEIGHT/MASS (DRY):	
	COLOUR: 5 BLACK RAL 9005	
	COLOR:	
	PACKING:	
	PACKING:	
	SEP.BEST.DER ELEKTR.TEILE: EST-37/DW3/VERKABELUNG	
	SEPARATE ORDER FOR ELECTR.PARTS	

Technical Cover

Page 6 from 6

Material number: 4657.054.026



4 WG 210 /

Pos.	Information	Amendment number
	EST-37: SIEHE 0899 004 433	
	*	

Assembly group overview

Page 1 from 2



4 WG 210 /

Material number: 4657.054.026

Graphics	Pos.	Material number	Name	Quantity	Amend. no.	Techn. Info.
465713003400	270	4657.130.034	ENGINE CONNECTION	1		
416603407800	500	4166.034.078	CONVERTER	1		
465710201200	30	4657.102.012	INPUT	1		
465712200500	220	4657.122.005	PRESSURE OIL PUMP	1		
465710104501	10	4657.101.045	TRANSMISSION HOUSING	1		
465710140800	20	4657.101.408	TRANSMISSION HOUSING	1		
465717102700	350	4657.171.027	COUPLING	1		
465717202800	360	4657.172.028	COUPLING	1		
465717301700	370	4657.173.017	COUPLING	1		
465717404000	380	4657.174.040	COUPLING	1		
465717501400	390	4657.175.014	COUPLING	1		
465717601700	400	4657.176.017	COUPLING	1		
465710300600	50	4657.103.006	OUTPUT	1		
465710340500	60	4657.103.405	OUTPUT	1		
465610901400	170	4656.109.014	PARKING BRAKE	1		
465710940300	70	4657.109.403	PARKING BRAKE	1		

Assembly group overview

Page 2 from 2

Material number: 4657.054.026



4 WG 210 /

Graphics	Pos.	Material number	Name	Quantity	Amend. no.	Techn. Info.
465715400400	340	4657.154.004	POWER TAKE-OFF	1		
465710601700	110	4657.106.017	SHIFT SYSTEM	1		
465710640720	115	4657.106.407	SHIFT SYSTEM	1		
465615901921	120	4656.159.019	SHIFT SYSTEM	1		
465712300600	225	4657.123.006	CONTROL UNIT	1		
465712000300	190	4657.120.003	PRESSURE REGULATOR	1		
465613800600	330	4656.138.006	FILTER	1		
465712400200	240	4657.124.002	TEMPERATURE SENSOR	1		
465712500700	250	4657.125.007	INDUCTIVE SENSOR	1		
465613700400	310	4656.137.004	EMERGENCY STEERING PUMP	1		
465713100650	290	4657.131.006	FILLER NOZZLE	2		

Plant

Page 1 from 1

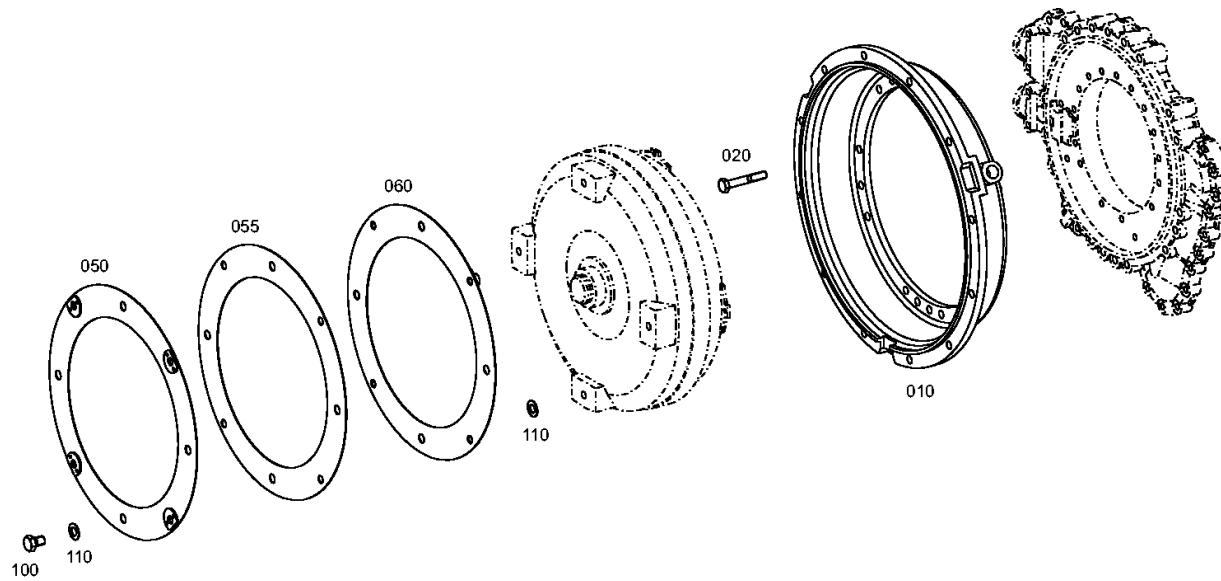
Material number: 4657.054.026

Plant: 465713003400

Material-assembly-group-no: 4657.130.034



4 WG 210 /
ENGINE CONNECTION



Plant

Page 1 from 1

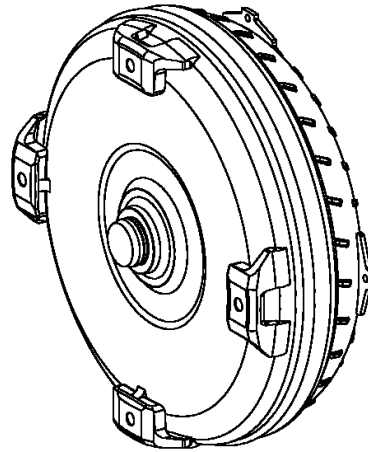
Material number: 4657.054.026

Plant: 416603407800

Material-assembly-group-no: 4166.034.078



4 WG 210 /
CONVERTER



010

Plant

Page 1 from 1

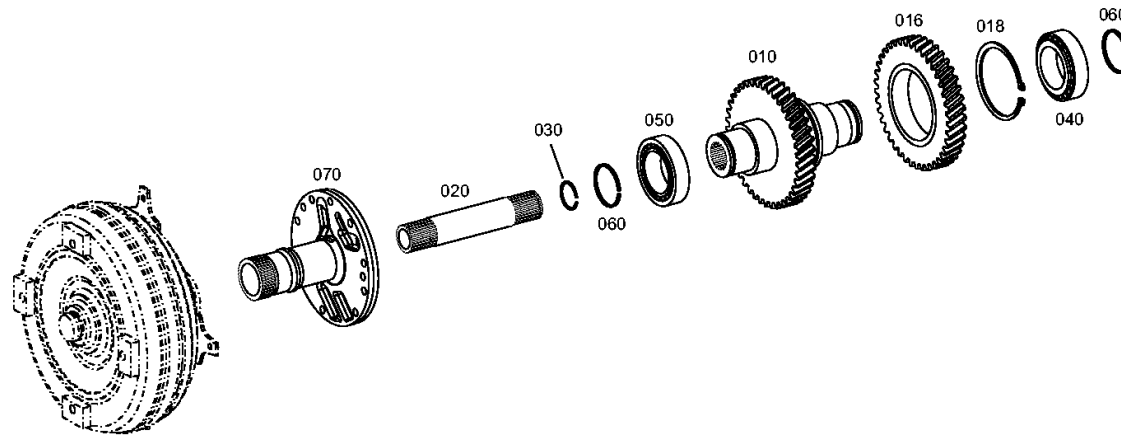
Material number: 4657.054.026

Plant: 465710201200

Material-assembly-group-no: 4657.102.012



4 WG 210 /
INPUT



Plant

Page 1 from 1

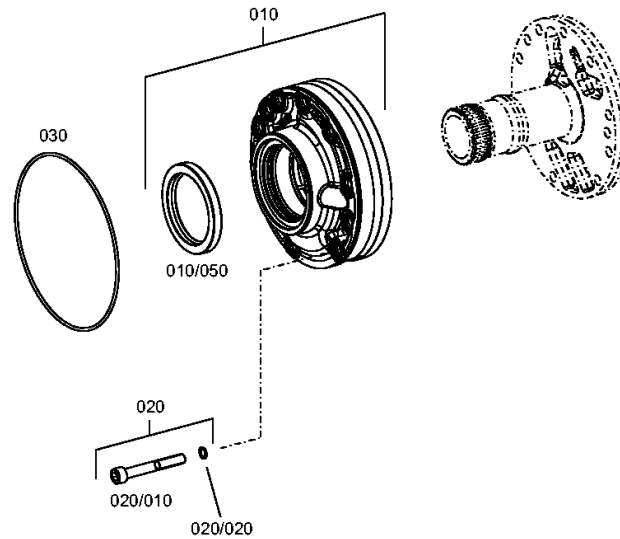
Material number: 4657.054.026

Plant: 465712200500

Material-assembly-group-no: 4657.122.005



4 WG 210 /
PRESSURE OIL PUMP



Plant

Page 1 from 2

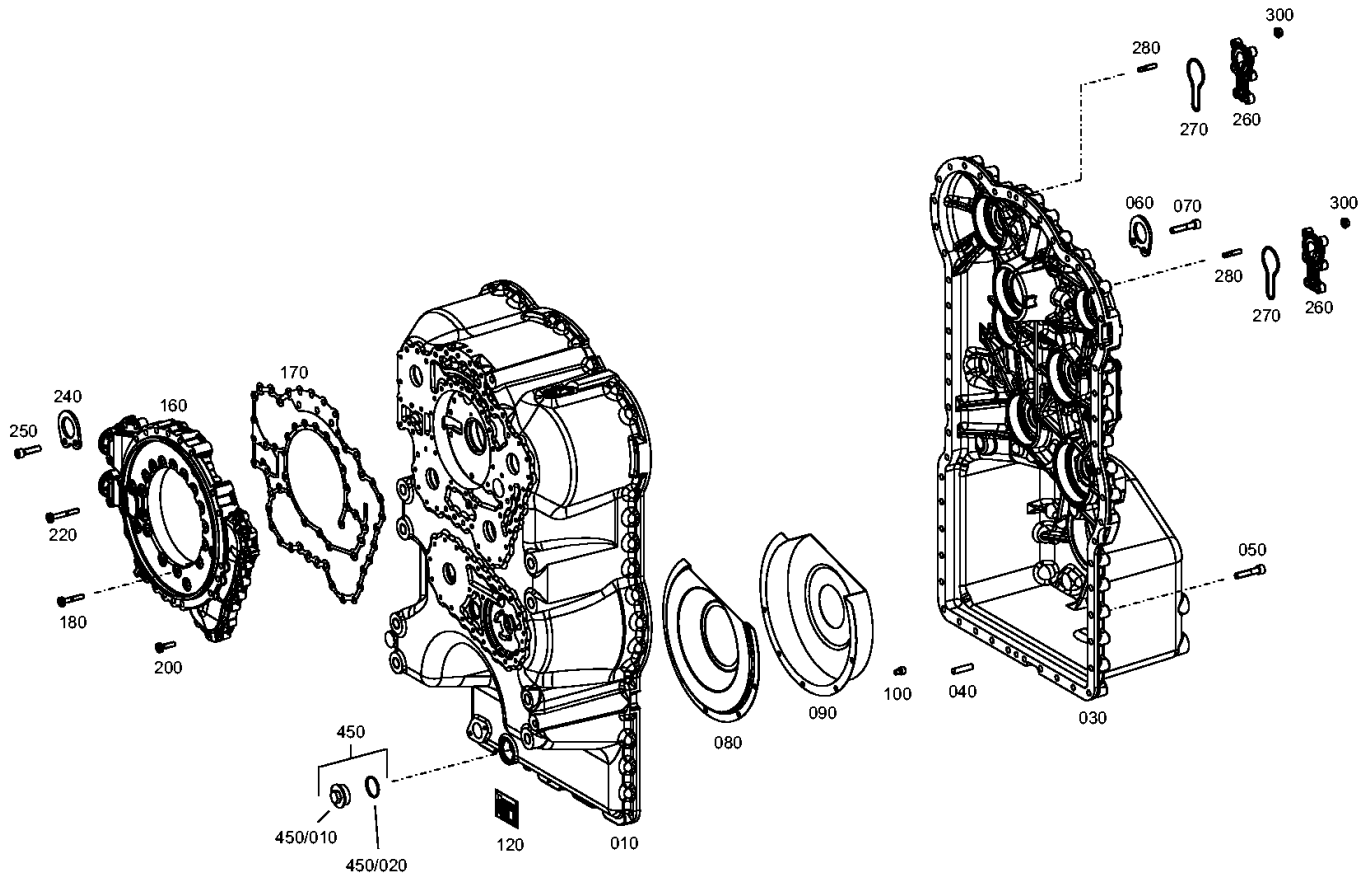
Material number: 4657.054.026

Plant: 465710104501

Material-assembly-group-no: 4657.101.045



4 WG 210 /
TRANSMISSION HOUSING



Plant

Page 2 from 2

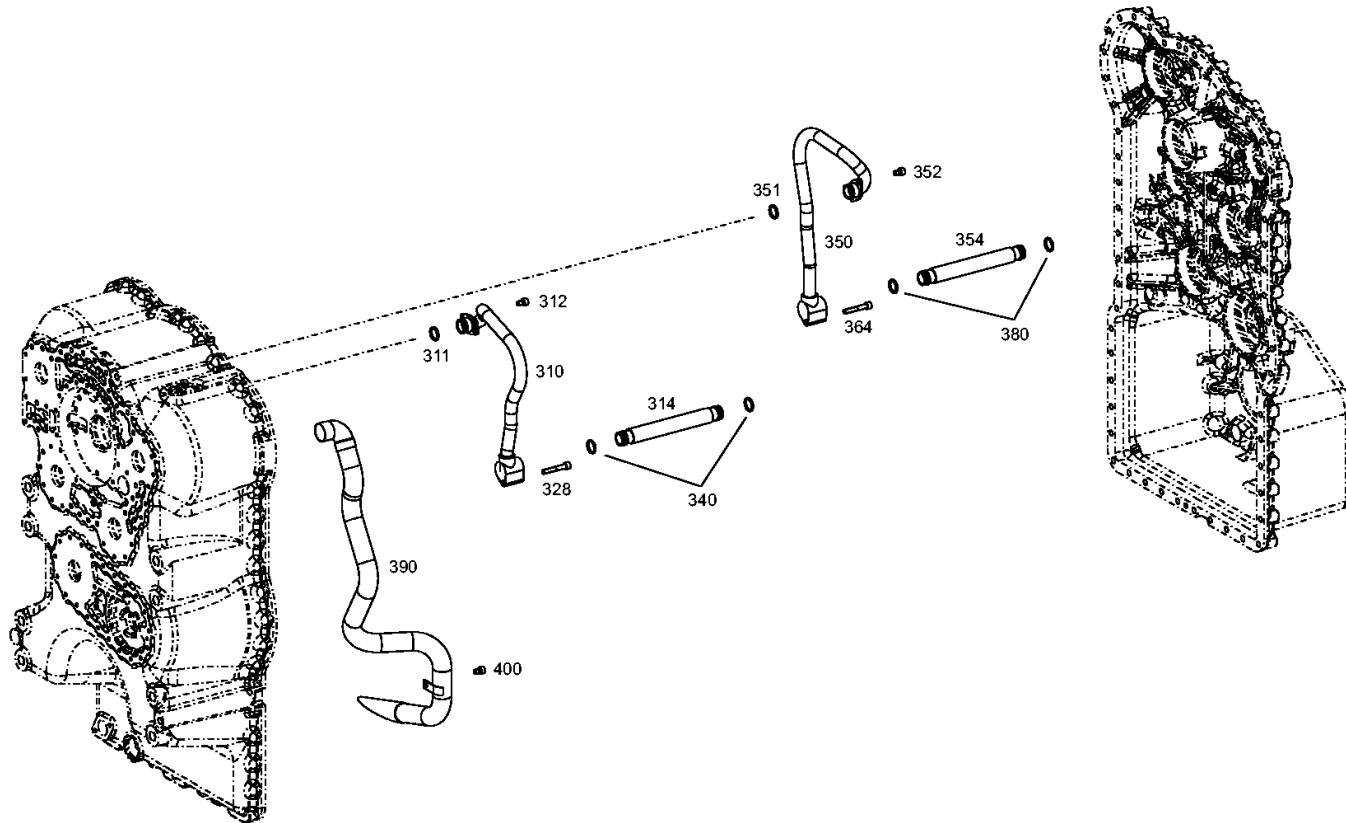
Material number: 4657.054.026

Plant: 465710104502

Material-assembly-group-no: 4657.101.045



4 WG 210 /
TRANSMISSION HOUSING



Plant

Page 1 from 1

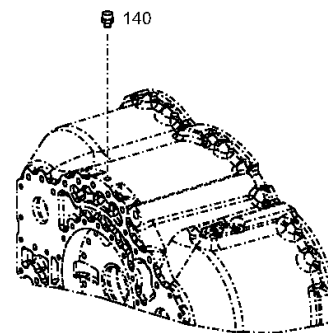
Material number: 4657.054.026

Plant: 465710140800

Material-assembly-group-no: 4657.101.408



4 WG 210 /
TRANSMISSION HOUSING



Plant

Page 1 from 1

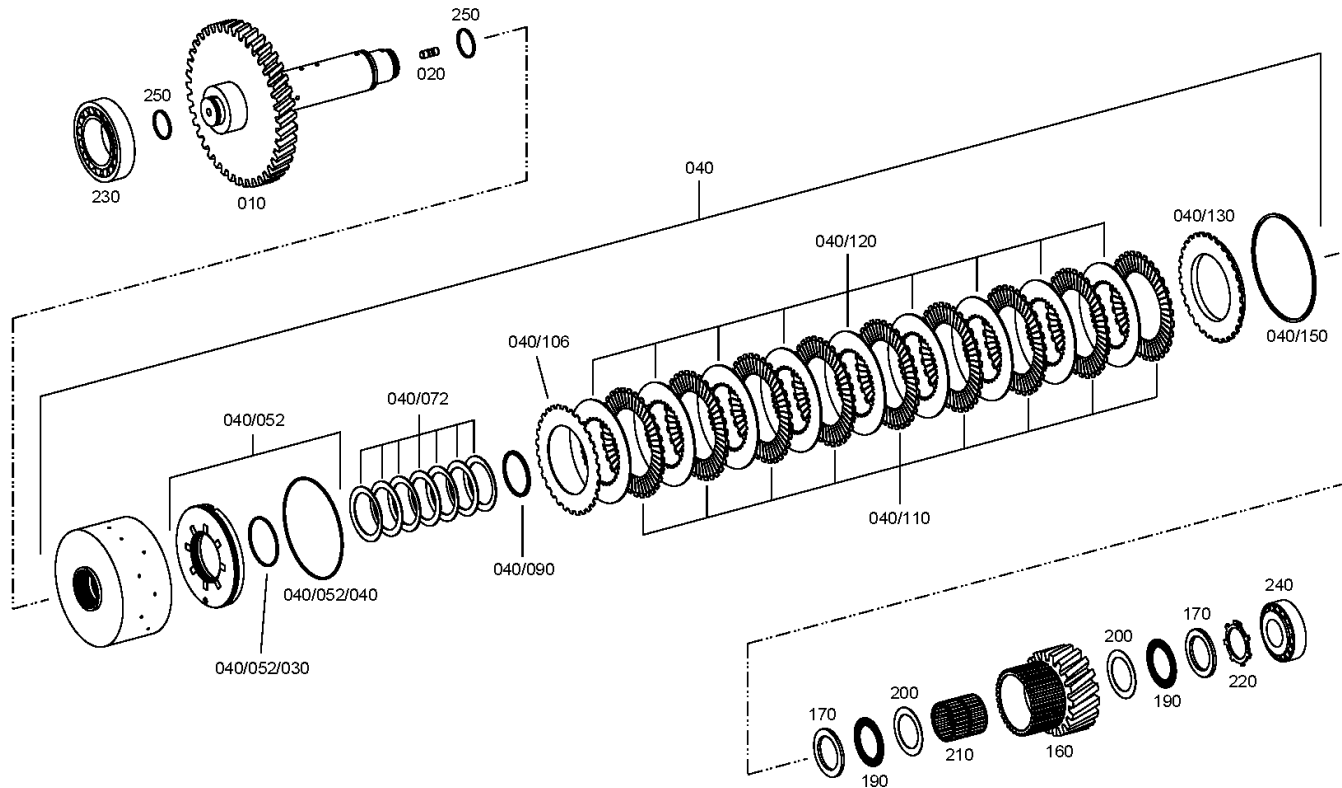
Material number: 4657.054.026

Plant: 465717102700

Material-assembly-group-no: 4657.171.027



4 WG 210 /
COUPLING



Plant

Page 1 from 1

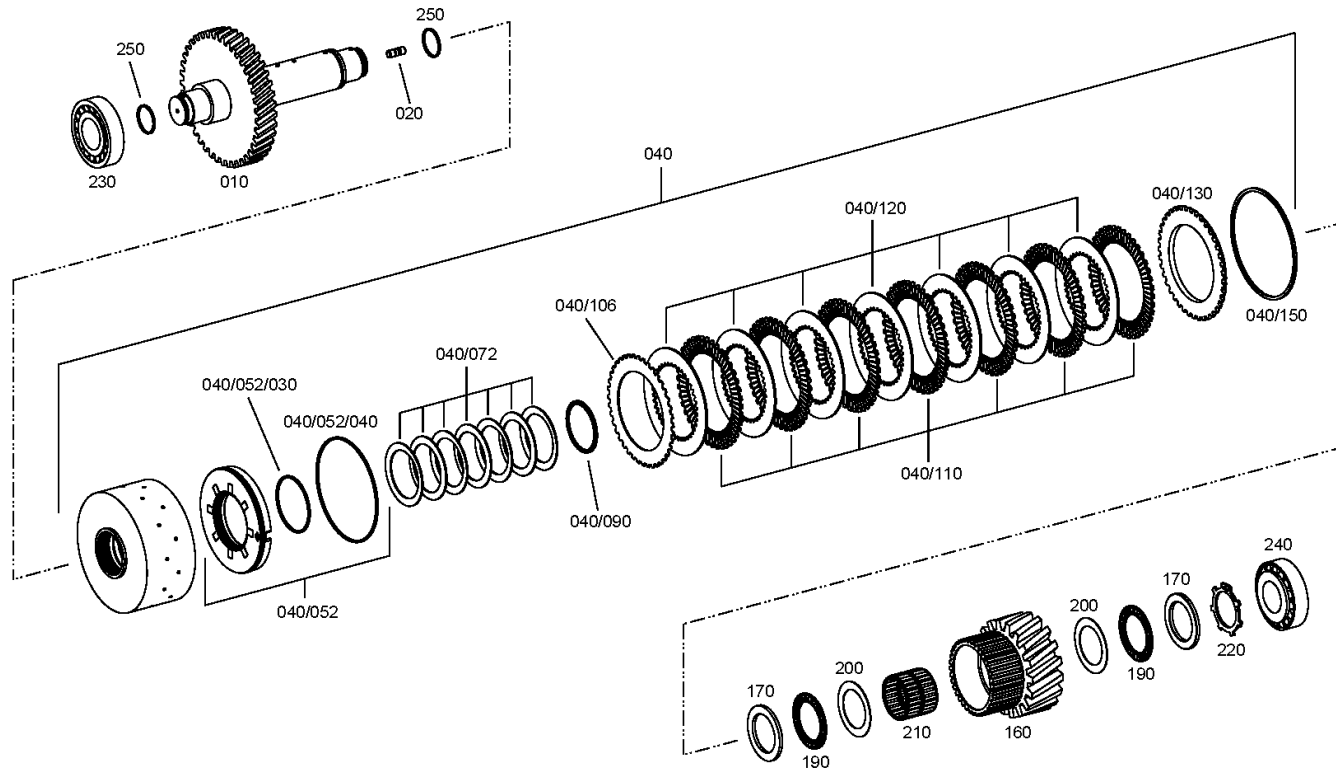
Material number: 4657.054.026

Plant: 465717202800

Material-assembly-group-no: 4657.172.028



4 WG 210 /
COUPLING



Plant

Page 1 from 1

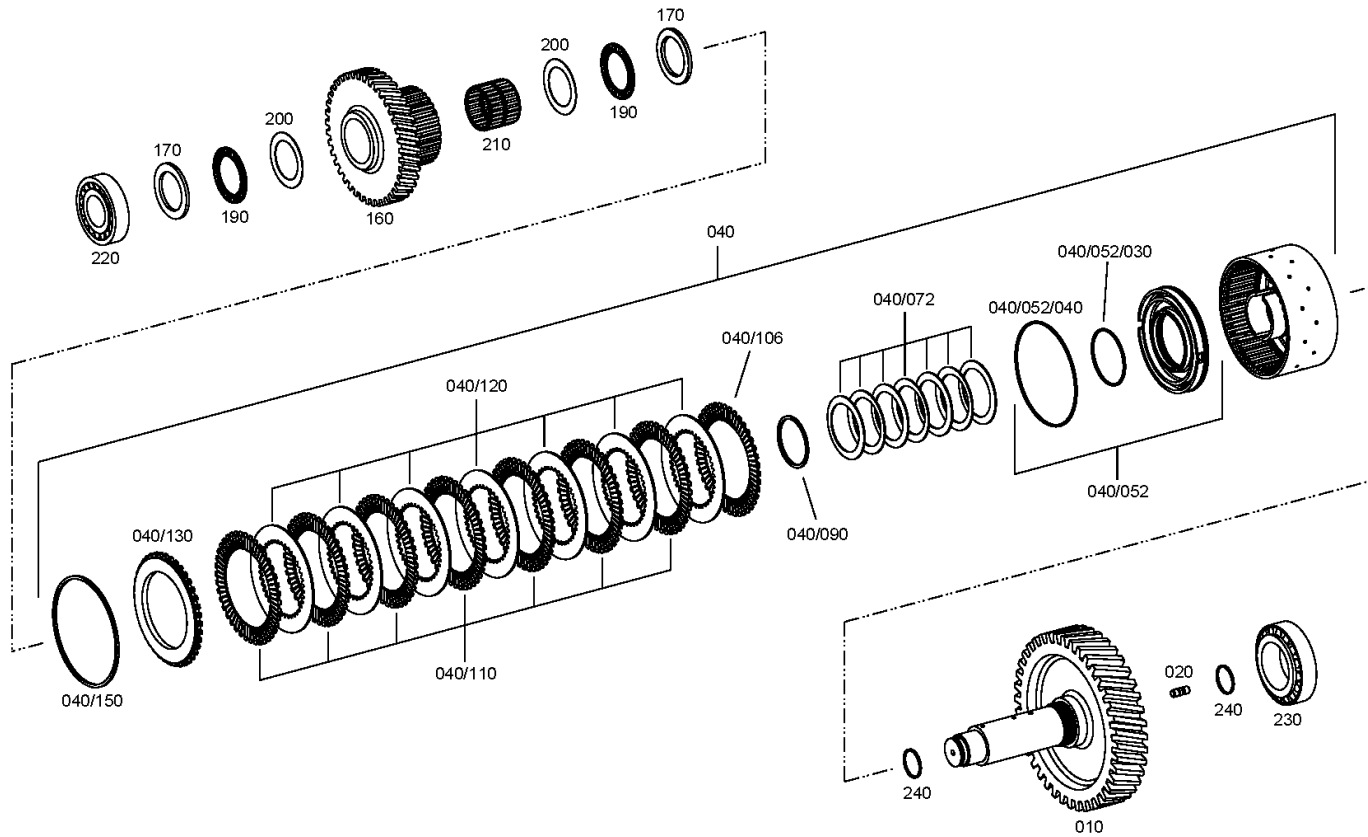
Material number: 4657.054.026

Plant: 465717301700

Material-assembly-group-no: 4657.173.017



4 WG 210 /
COUPLING



Plant

Page 1 from 1

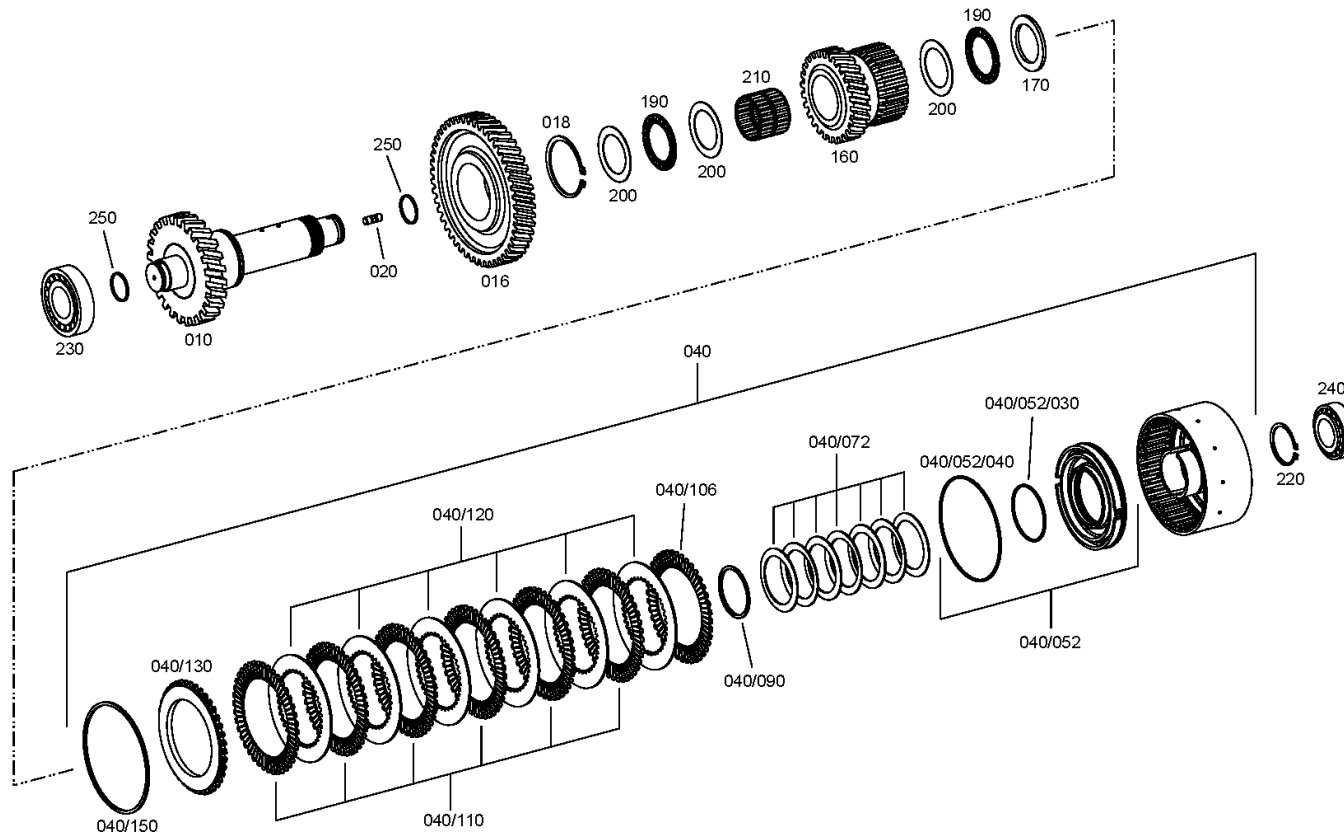
Material number: 4657.054.026

Plant: 465717404000

Material-assembly-group-no: 4657.174.040



4 WG 210 /
COUPLING



Plant

Page 1 from 1

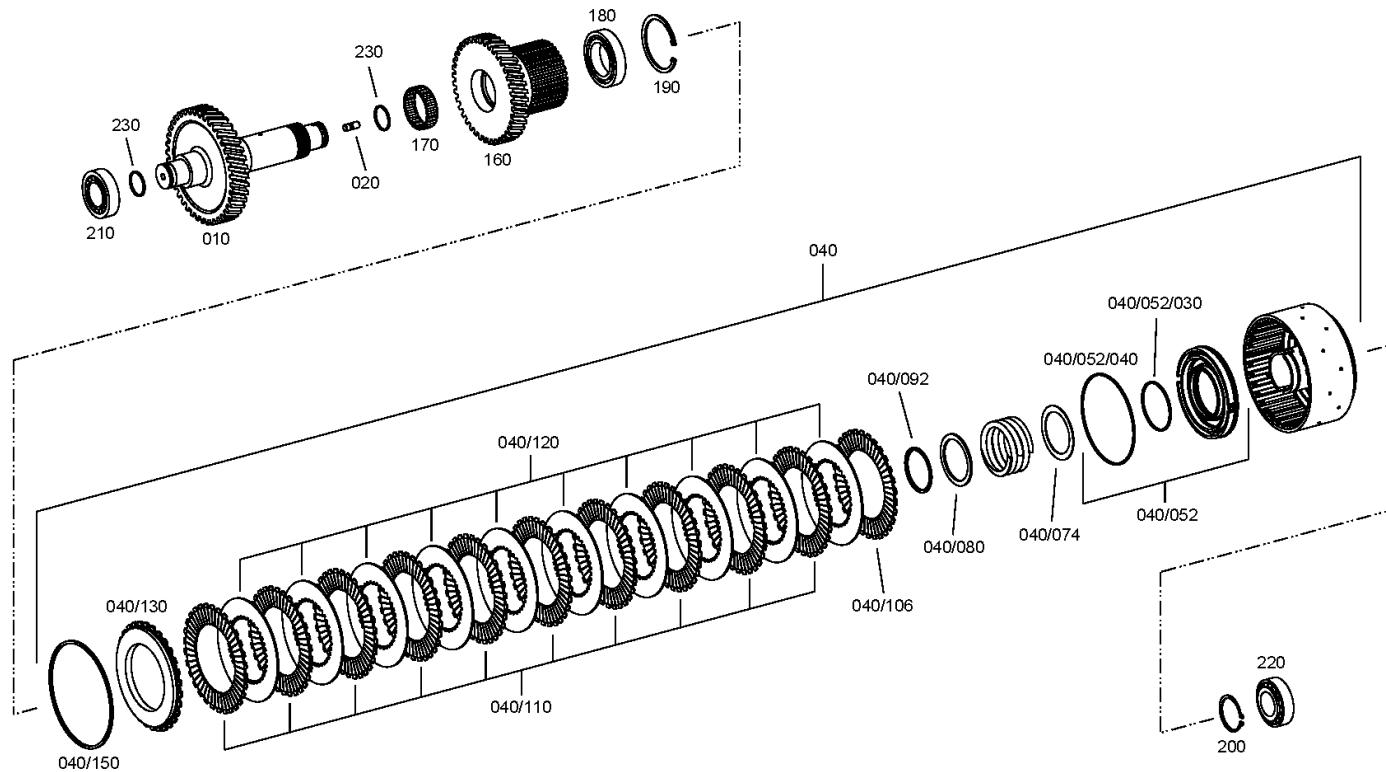
Material number: 4657.054.026

Plant: 465717501400

Material-assembly-group-no: 4657.175.014



4 WG 210 /
COUPLING



Plant

Page 1 from 1

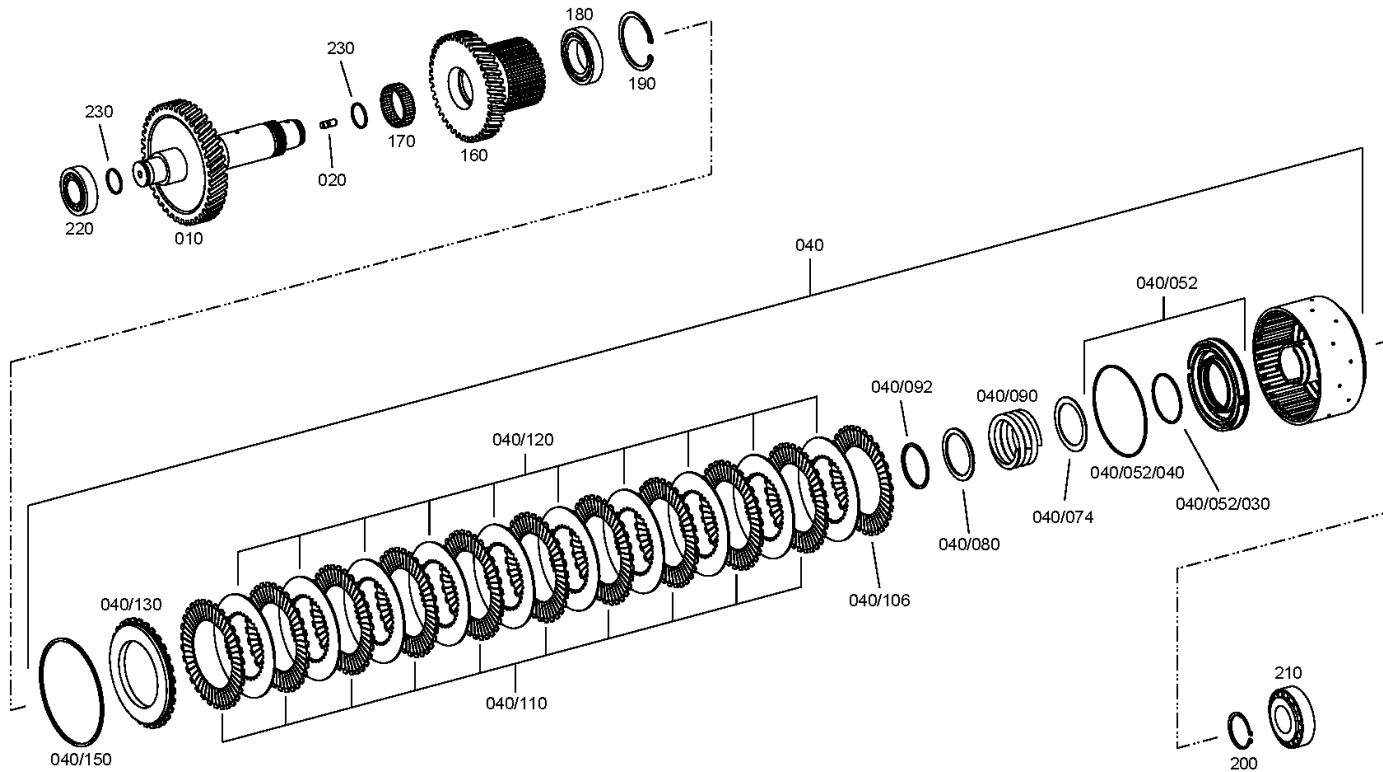
Material number: 4657.054.026

Plant: 465717601700

Material-assembly-group-no: 4657.176.017



4 WG 210 /
COUPLING



Plant

Page 1 from 2

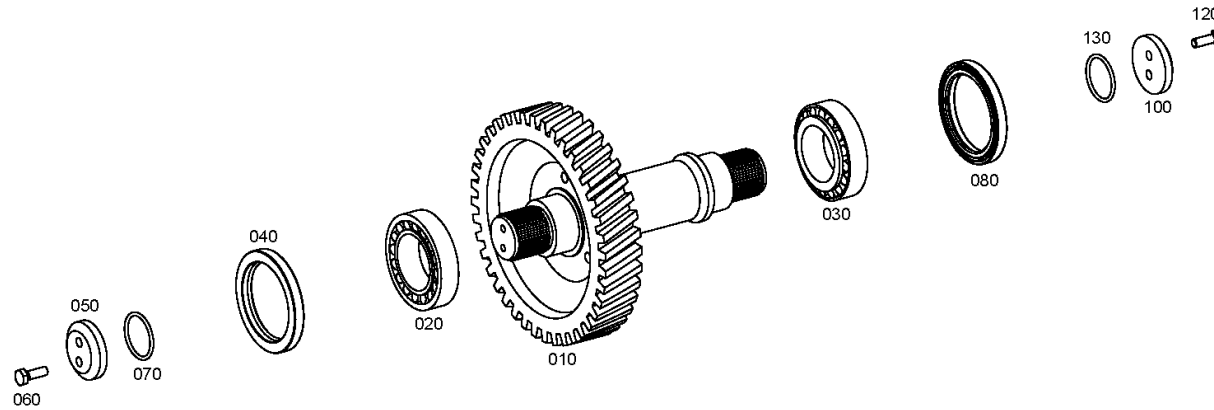
Material number: 4657.054.026

Plant: 465710300600

Material-assembly-group-no: 4657.103.006



4 WG 210 /
OUTPUT



Plant

Page 2 from 2

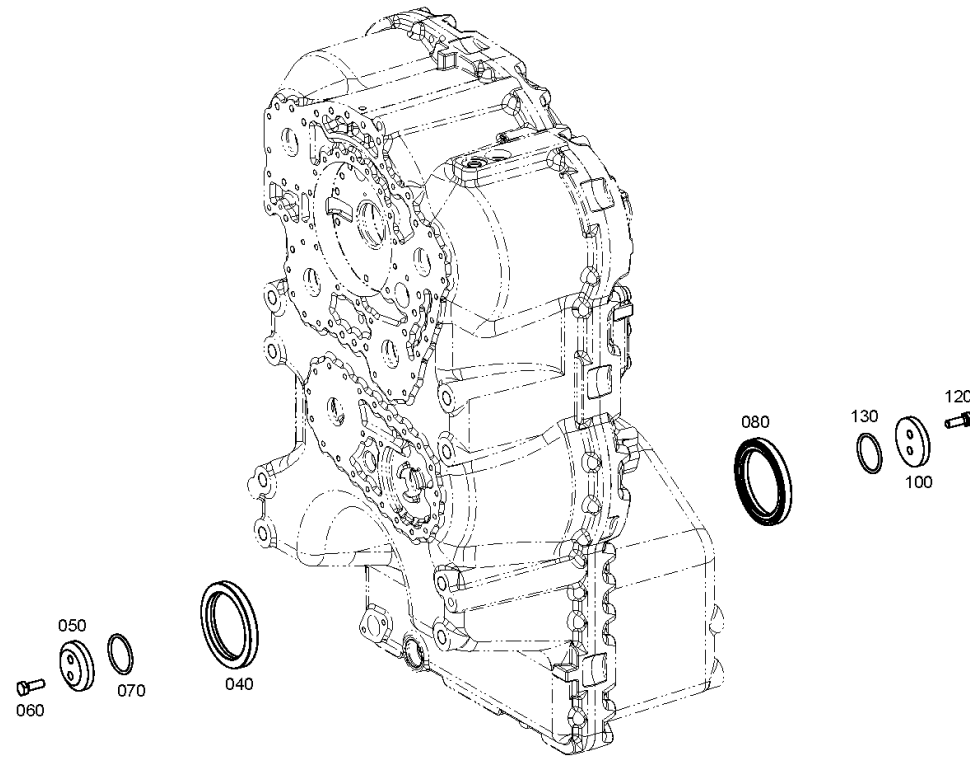
Material number: 4657.054.026

Plant: 465710300680

Material-assembly-group-no: 4657.103.006



4 WG 210 /
OUTPUT



Plant

Page 1 from 1

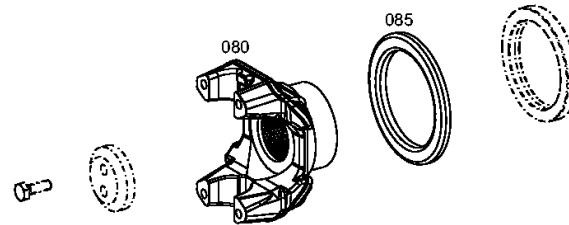
Material number: 4657.054.026

Plant: 465710340500

Material-assembly-group-no: 4657.103.405



4 WG 210 /
OUTPUT



Plant

Page 1 from 1

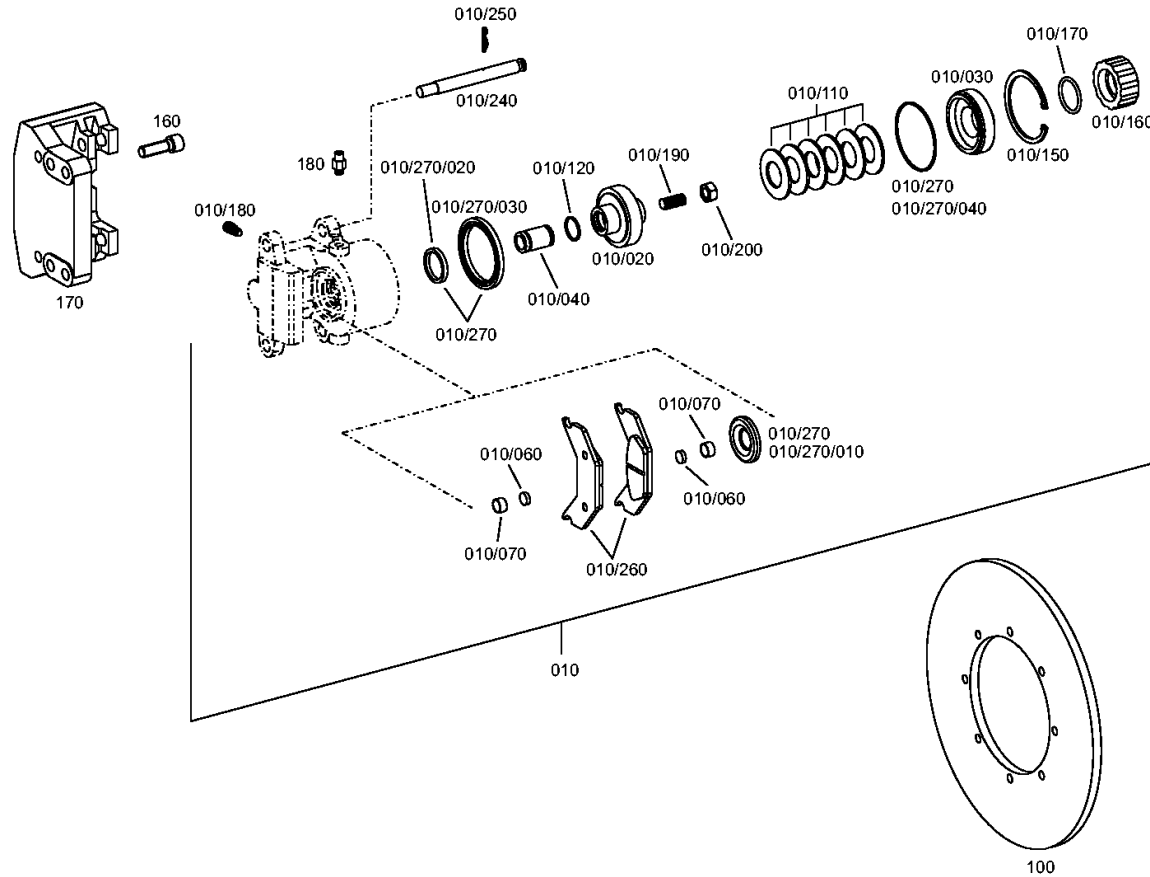
Material number: 4657.054.026

Plant: 465610901400

Material-assembly-group-no: 4656.109.014



4 WG 210 /
PARKING BRAKE



Plant

Page 1 from 1

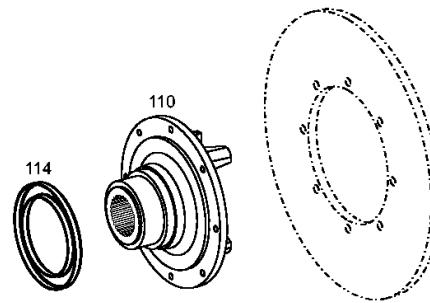
Material number: 4657.054.026

Plant: 465710940300

Material-assembly-group-no: 4657.109.403



4 WG 210 /
PARKING BRAKE



Plant

Page 1 from 1

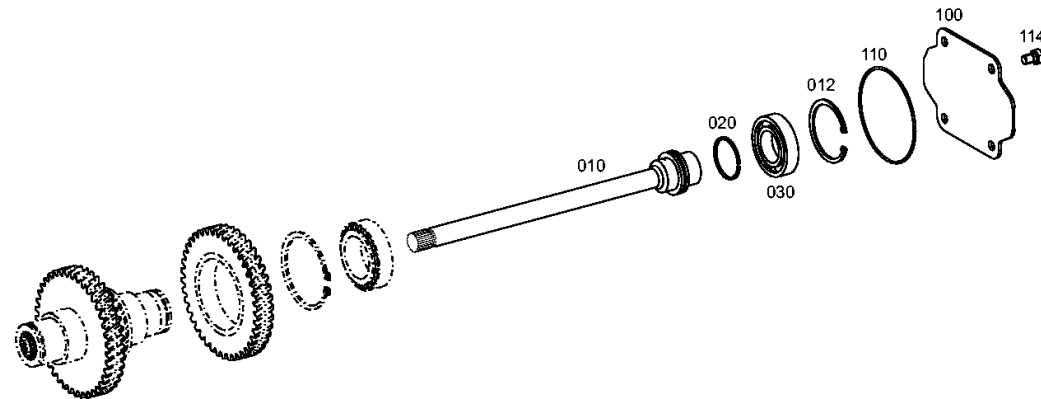
Material number: 4657.054.026

Plant: 465715400400

Material-assembly-group-no: 4657.154.004



4 WG 210 /
POWER TAKE-OFF



Plant

Page 1 from 2

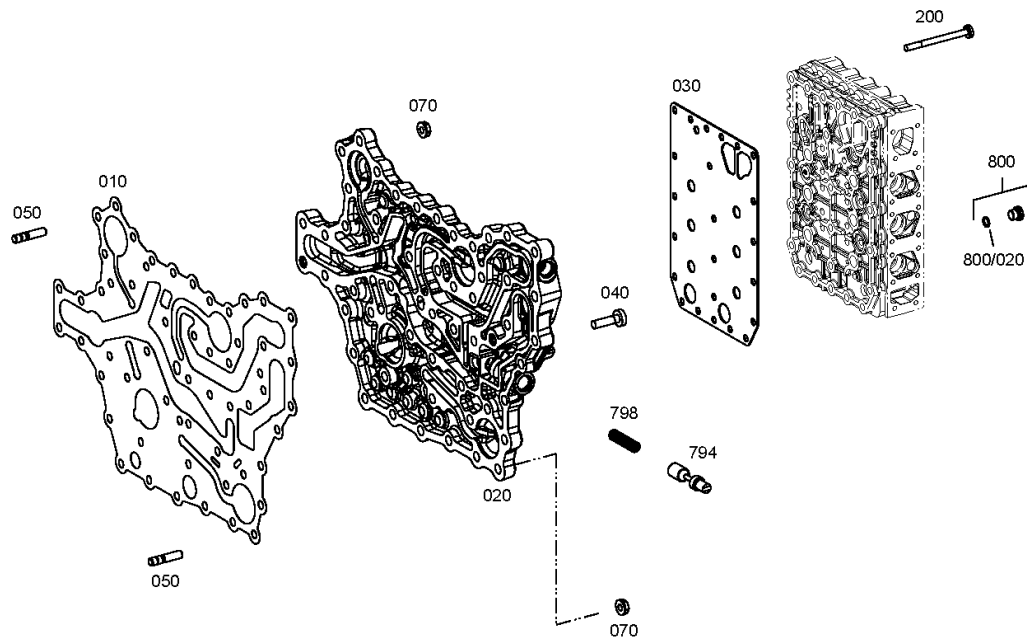
Material number: 4657.054.026

Plant: 465710601700

Material-assembly-group-no: 4657.106.017



4 WG 210 /
SHIFT SYSTEM



Plant

Page 2 from 2

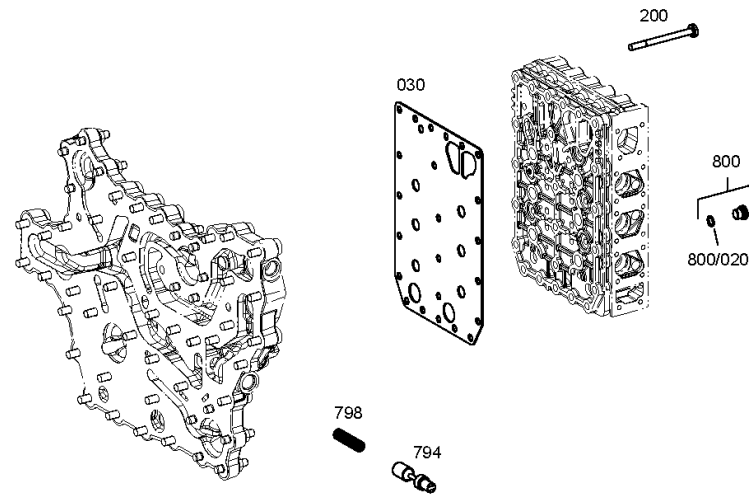
Material number: 4657.054.026

Plant: 465710601780

Material-assembly-group-no: 4657.106.017



4 WG 210 /
SHIFT SYSTEM



Plant

Page 1 from 1

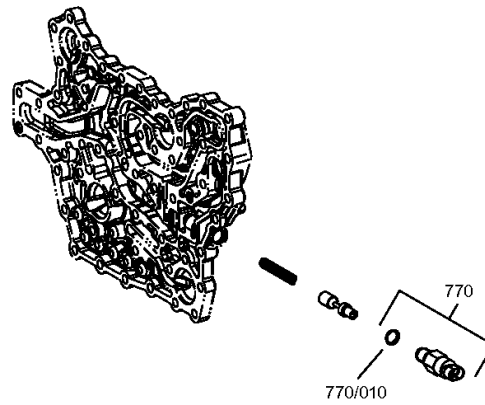
Material number: 4657.054.026

Plant: 465710640720

Material-assembly-group-no: 4657.106.407



4 WG 210 /
SHIFT SYSTEM



Plant

Page 1 from 2

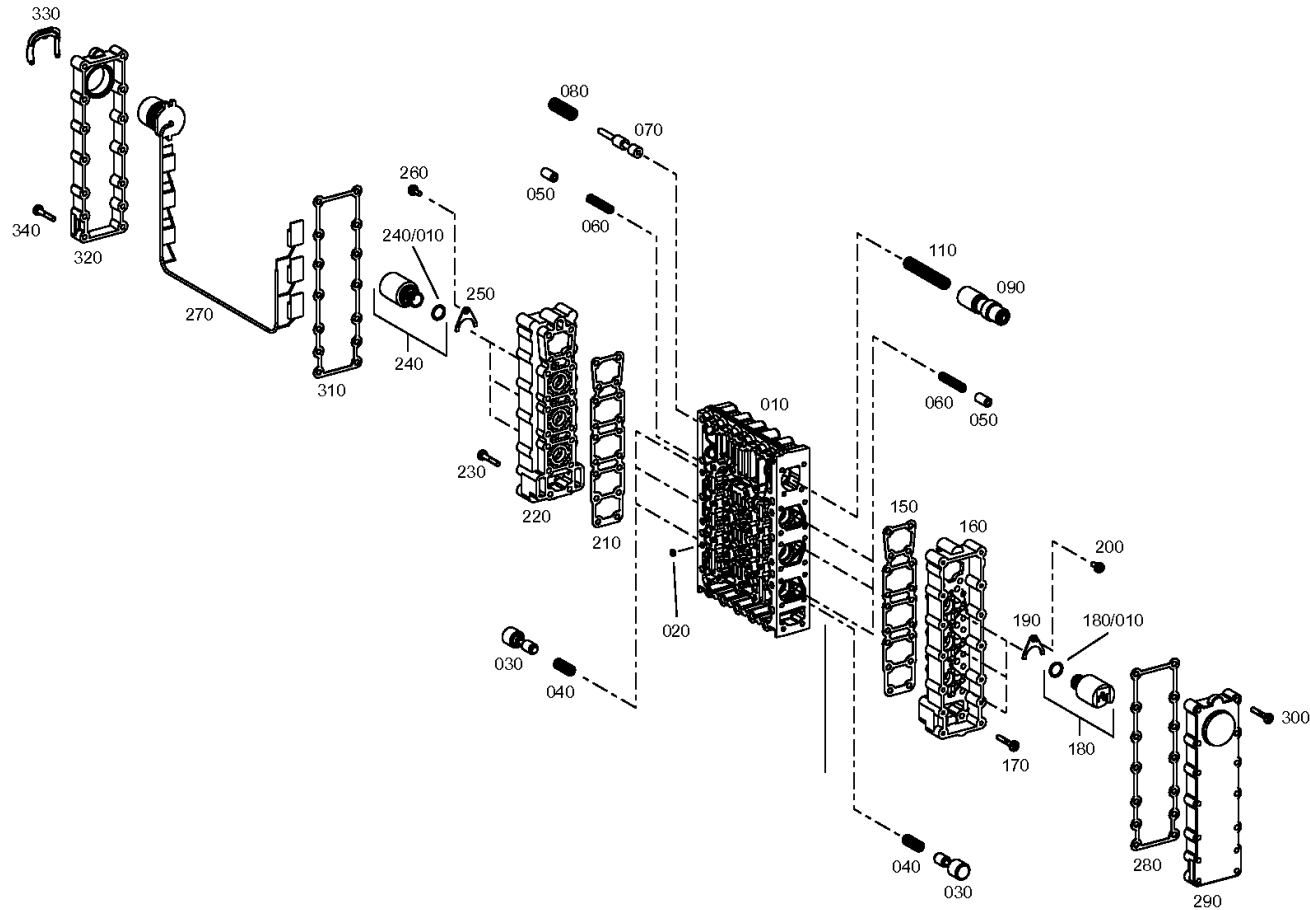
Material number: 4657.054.026

Plant: 465615901921

Material-assembly-group-no: 4656.159.019



4 WG 210 /
SHIFT SYSTEM



Plant

Page 2 from 2

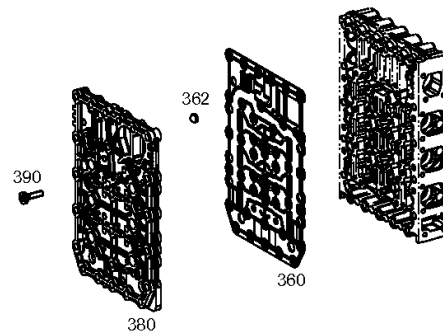
Material number: 4657.054.026

Plant: 465615901922

Material-assembly-group-no: 4656.159.019



4 WG 210 /
SHIFT SYSTEM



Plant

Page 1 from 1

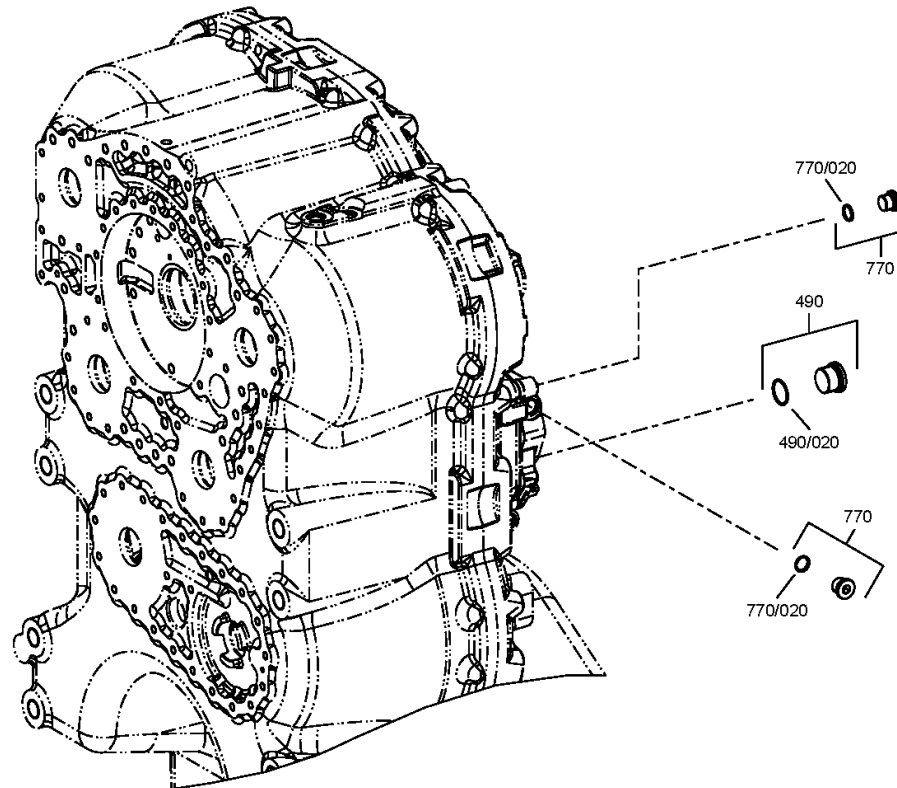
Material number: 4657.054.026

Plant: 465712300600

Material-assembly-group-no: 4657.123.006



4 WG 210 /
CONTROL UNIT



Plant

Page 1 from 1

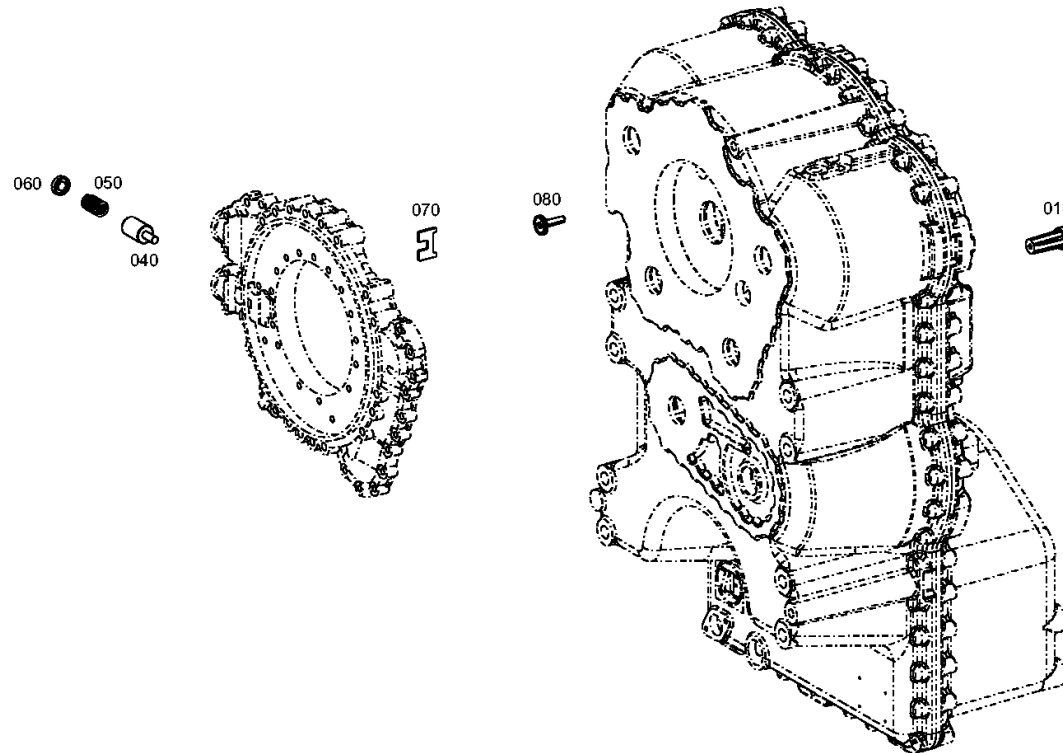
Material number: 4657.054.026

Plant: 465712000300

Material-assembly-group-no: 4657.120.003



4 WG 210 /
PRESSURE REGULATOR



Plant

Page 1 from 1

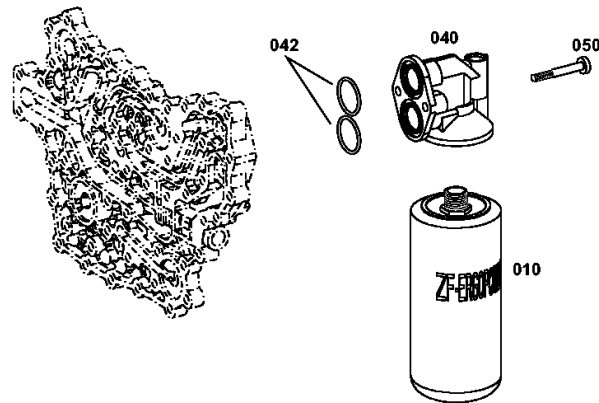
Material number: 4657.054.026

Plant: 465613800600

Material-assembly-group-no: 4656.138.006



4 WG 210 /
FILTER



Plant

Page 1 from 1

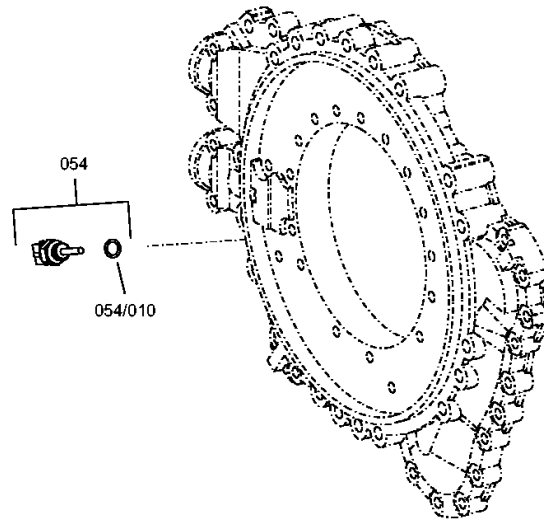
Material number: 4657.054.026

Plant: 465712400200

Material-assembly-group-no: 4657.124.002



4 WG 210 /
TEMPERATURE SENSOR



Plant

Page 1 from 1

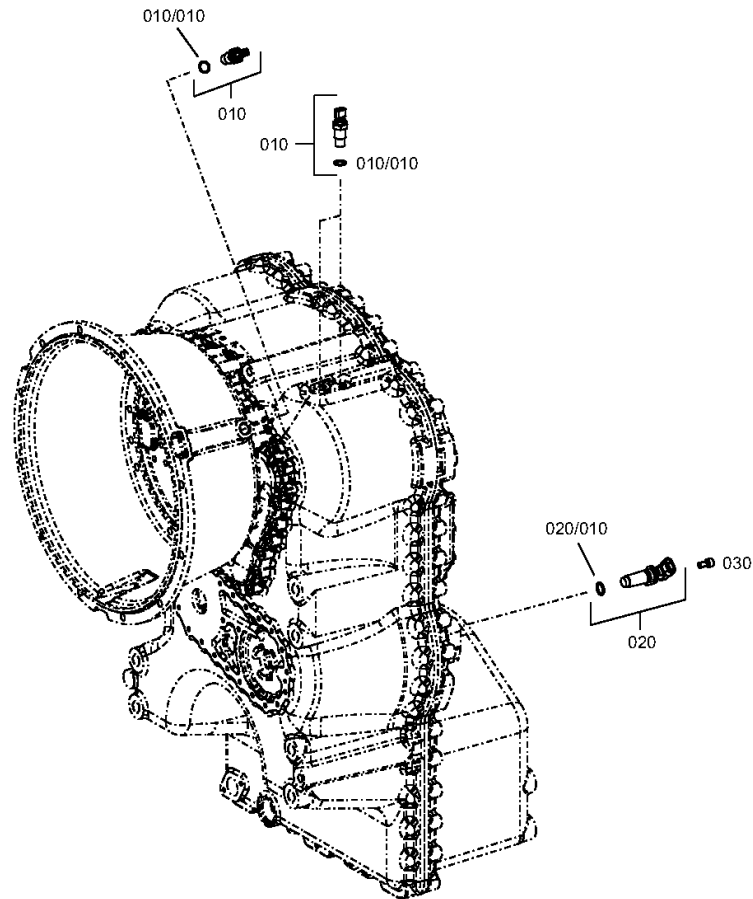
Material number: 4657.054.026

Plant: 465712500700

Material-assembly-group-no: 4657.125.007



4 WG 210 /
INDUCTIVE SENSOR



Plant

Page 1 from 1

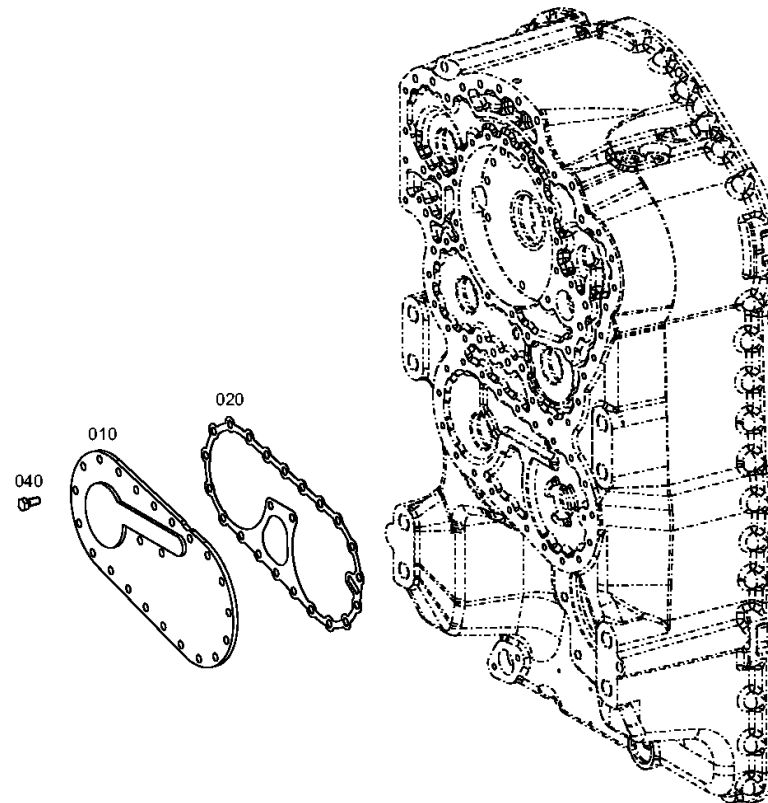
Material number: 4657.054.026

Plant: 465613700400

Material-assembly-group-no: 4656.137.004



4 WG 210 /
EMERGENCY STEERING PUMP



Plant

Page 1 from 1

Material number: 4657.054.026

Plant: 465713100650

Material-assembly-group-no: 4657.131.006



4 WG 210 /
FILLER NOZZLE

